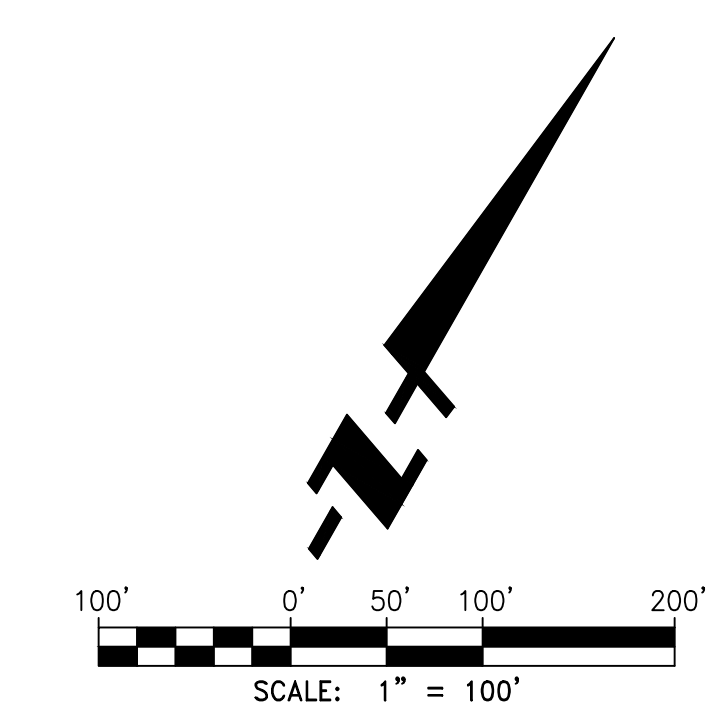
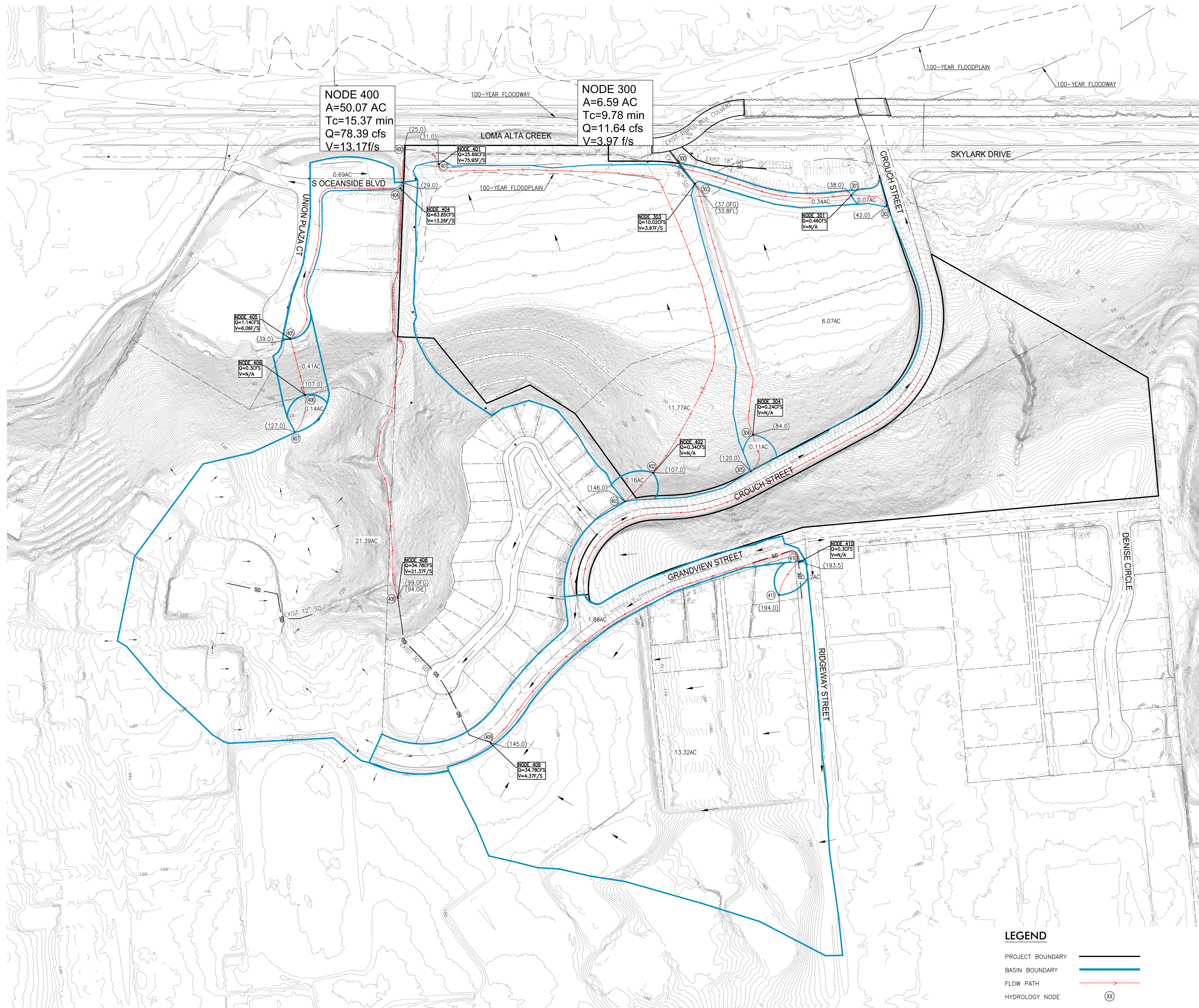


APPENDIX 1  
EXISTING HYDROLOGY MAP  
PROPOSED HYDROLOGY MAP



- LEGEND**
- PROJECT BOUNDARY ———
  - BASIN BOUNDARY ———
  - FLOW PATH ———
  - HYDROLOGY NODE (XX)

JEFFERSON OCEANSIDE

EXISTING 100-YEAR HYDROLOGY

REVISIONS			
NO.	INIT.	DATE	DESCRIPTION

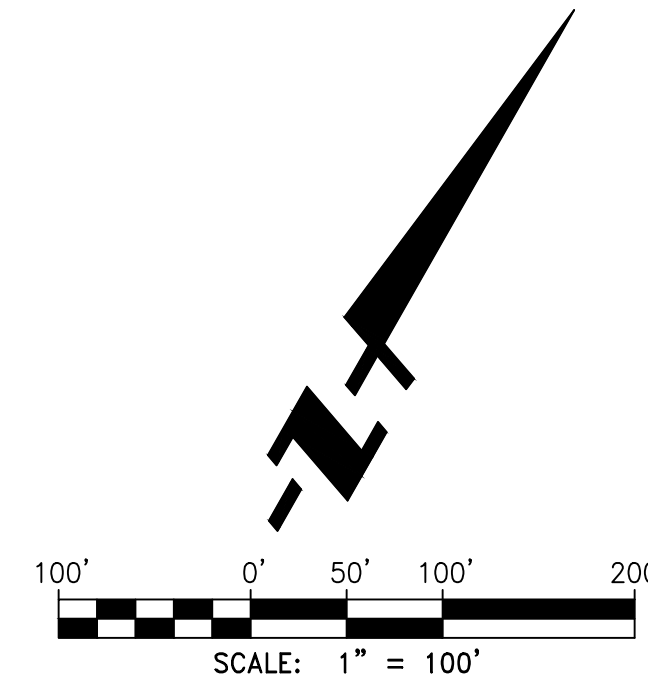
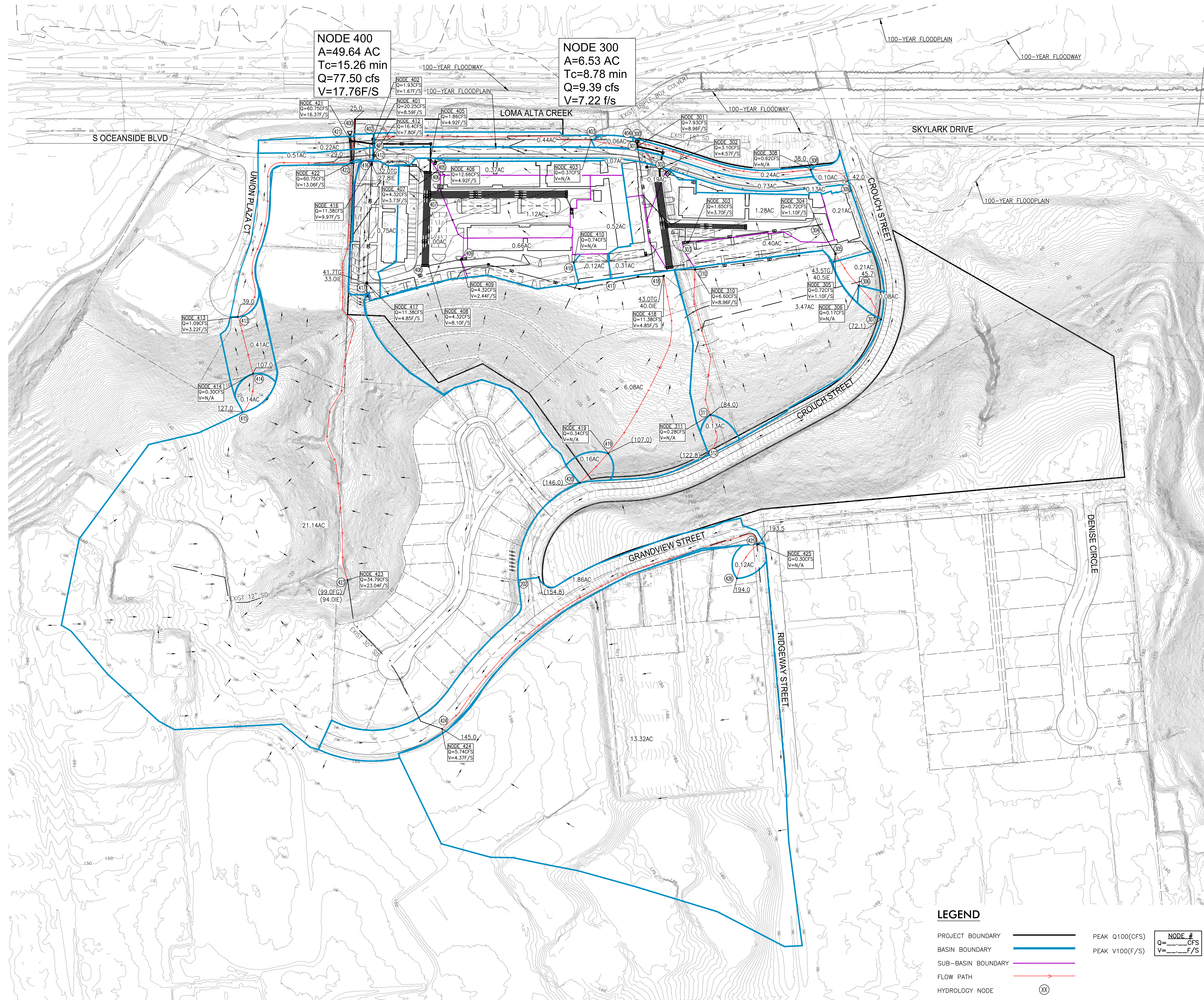
**FUSCOE**  
 ENGINEERING  
 6390 Greenwich Dr., Suite 170  
 San Diego, California 92122  
 tel 858.554.1500 • fax 858.597.0335  
 www.fuscoe.com

JOB NO.  
557-010

DRAWN BY:  
BC

SHEET  
1 of 1

V:\PROJECTS\JEFFERSON OCEANSIDE\100-YEAR HYDROLOGY\100-YEAR HYDROLOGY.DWG (02-24-22 10:44:14AM) Plotted by: Bham



**LEGEND**

- PROJECT BOUNDARY
- BASIN BOUNDARY
- SUB-BASIN BOUNDARY
- FLOW PATH
- HYDROLOGY NODE
- PEAK Q100(CFS)
- PEAK V100(F/S)
- NODE #
- Q=\_\_\_\_\_CFS
- V=\_\_\_\_\_F/S

**REVISIONS**

NO.	INIT. DATE	DESCRIPTION	APP'D	DATE

**JEFFERSON OCEANSIDE**

**PROPOSED 100-YEAR HYDROLOGY**

6390 Greenwich Dr., Suite 170  
San Diego, California 92122  
tel 858.554.1500 • fax 858.597.0335  
www.fusco.com

JOB NO.  
557-010

DRAWN BY:  
BC

SHEET  
**1 of 1**

V:\FUSCO\CORP\SD\JEFFERSON\PROJECTS\100-YEAR HYDROLOGY\100-YEAR HYDROLOGY.dwg (02-24-22 11:09:59AM) Plotted by: BSmith