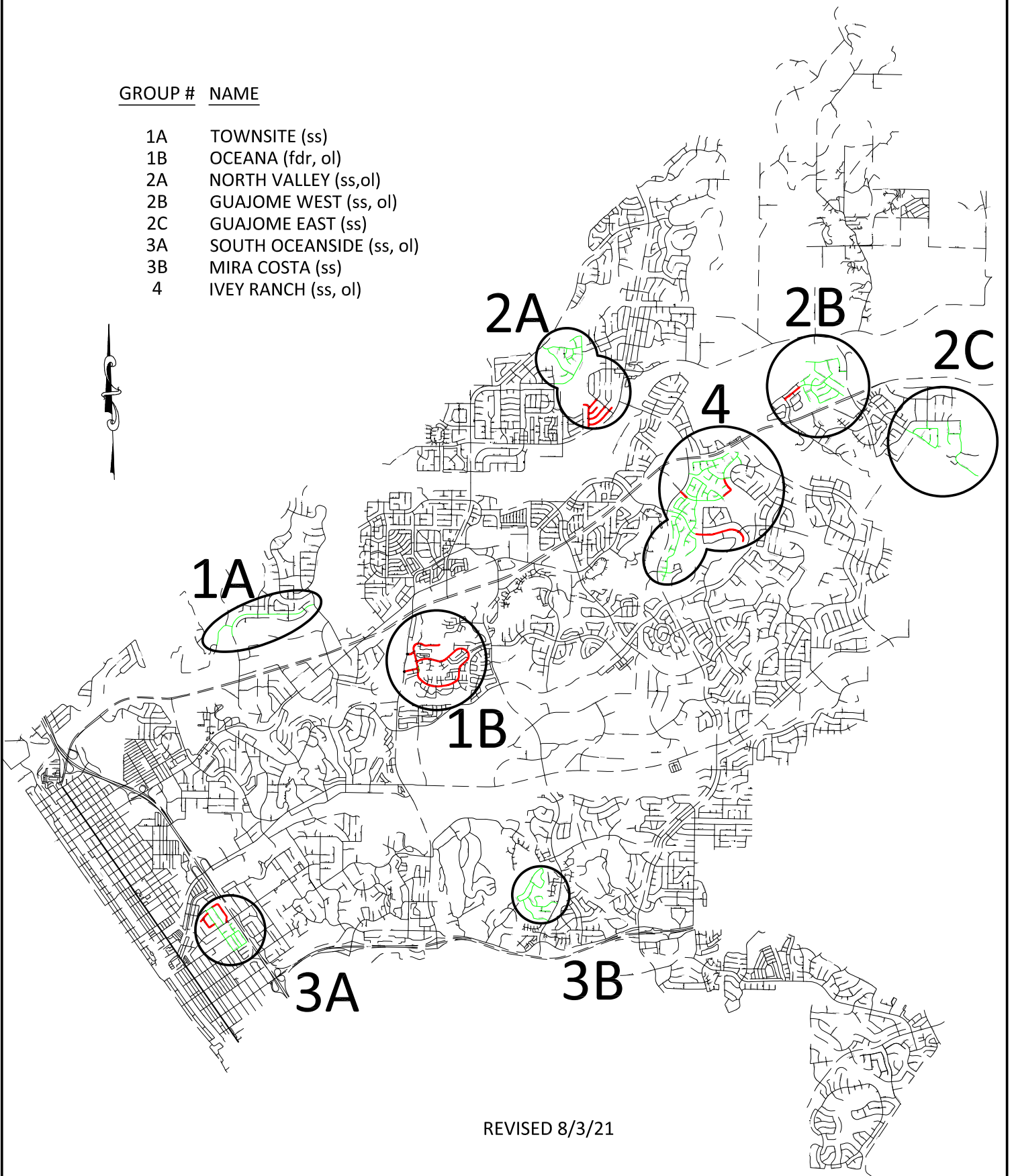


GROUP # NAME

- 1A TOWNSITE (ss)
- 1B OCEANA (fdr, ol)
- 2A NORTH VALLEY (ss,ol)
- 2B GUAJOME WEST (ss, ol)
- 2C GUAJOME EAST (ss)
- 3A SOUTH OCEANSIDE (ss, ol)
- 3B MIRA COSTA (ss)
- 4 IVEY RANCH (ss, ol)

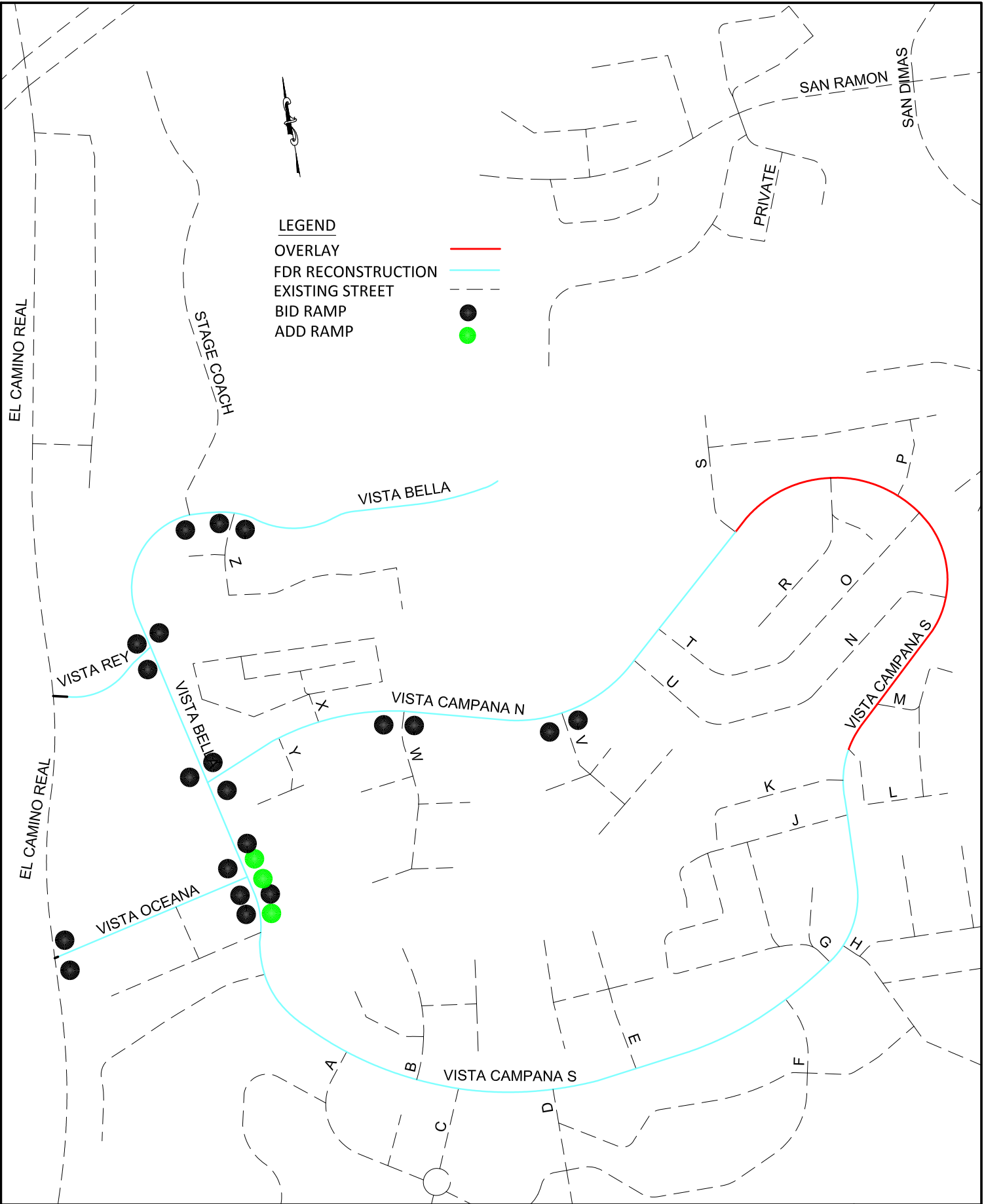


REVISED 8/3/21

FY 20-21 OVERLAY PROJECT, CIP 21-00003 &
 FY 20-21 SLURRY SEAL PROJECT, CIP 21-00002

OVERVIEW MAP




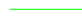
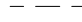



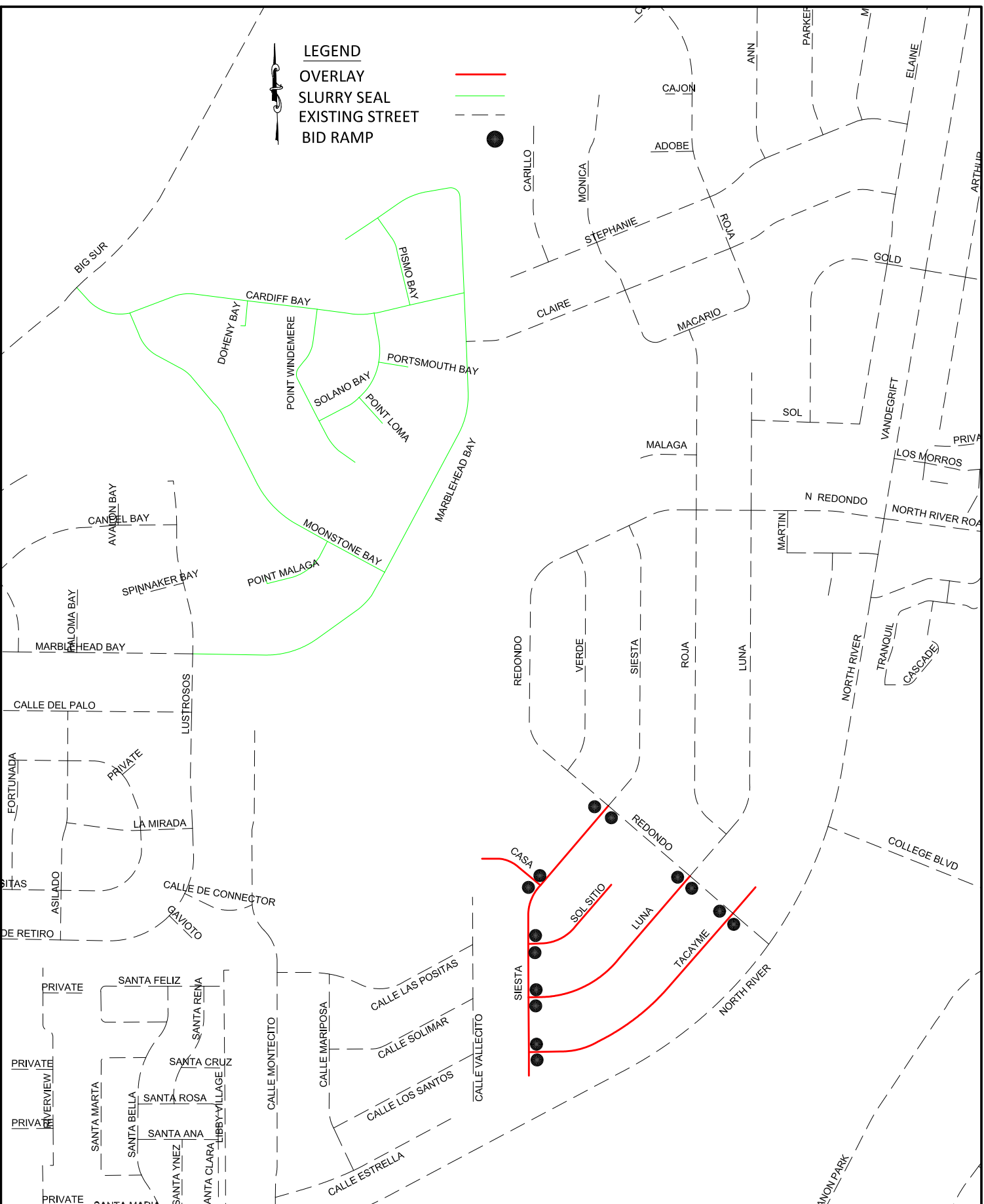
FY 20-21 OVERLAY PROJECT, CIP 21-00003 &
 FY 20-21 SLURRY SEAL PROJECT, CIP 21-00002

GROUP 1B - OCEANA



LEGEND

-  OVERLAY
-  SLURRY SEAL
-  EXISTING STREET
-  BID RAMP



FY 20-21 OVERLAY PROJECT, CIP 21-00003 &
 FY 20-21 SLURRY SEAL PROJECT, CIP 21-00002
GROUP 2A - NORTH VALLEY



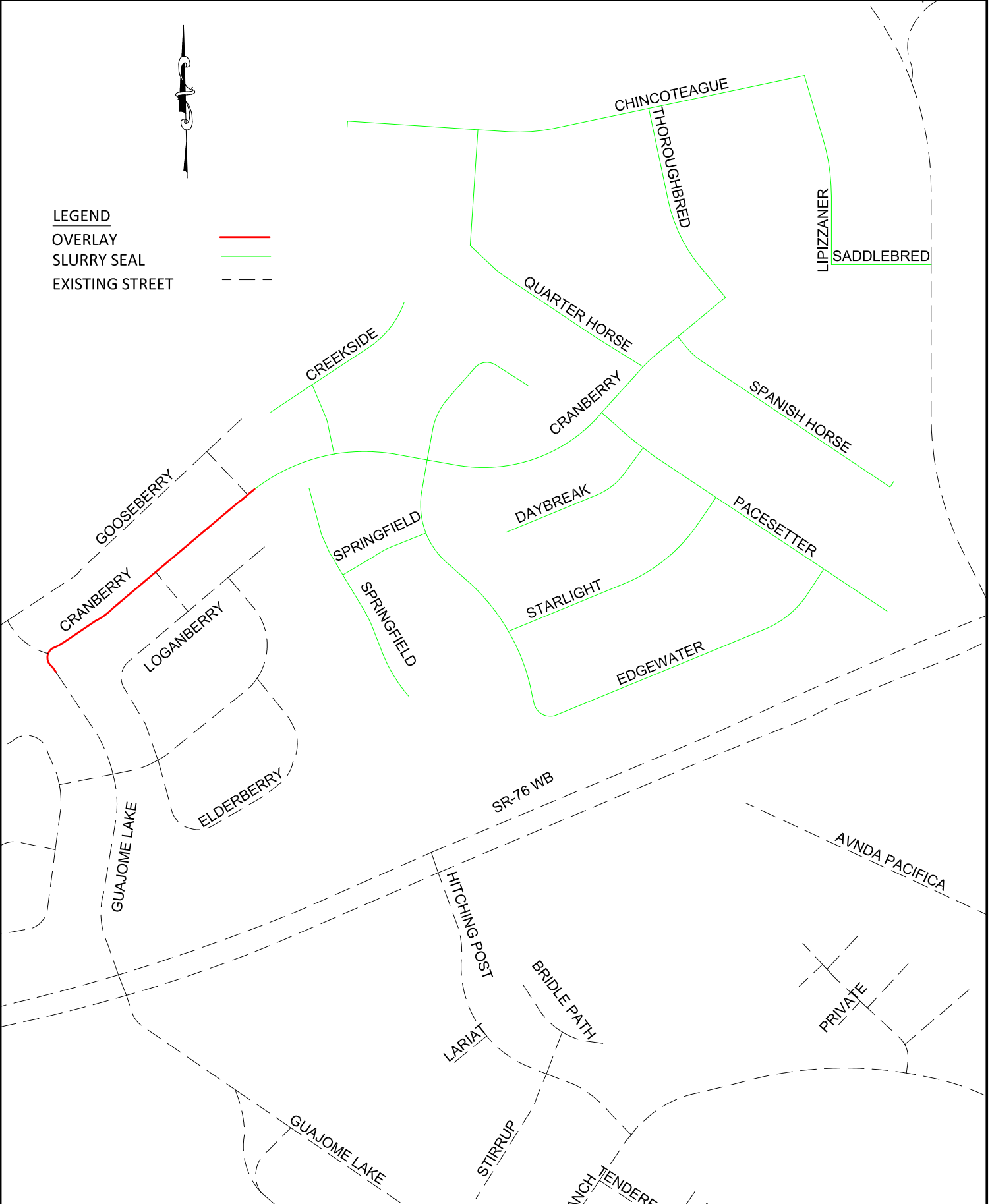


LEGEND

OVERLAY

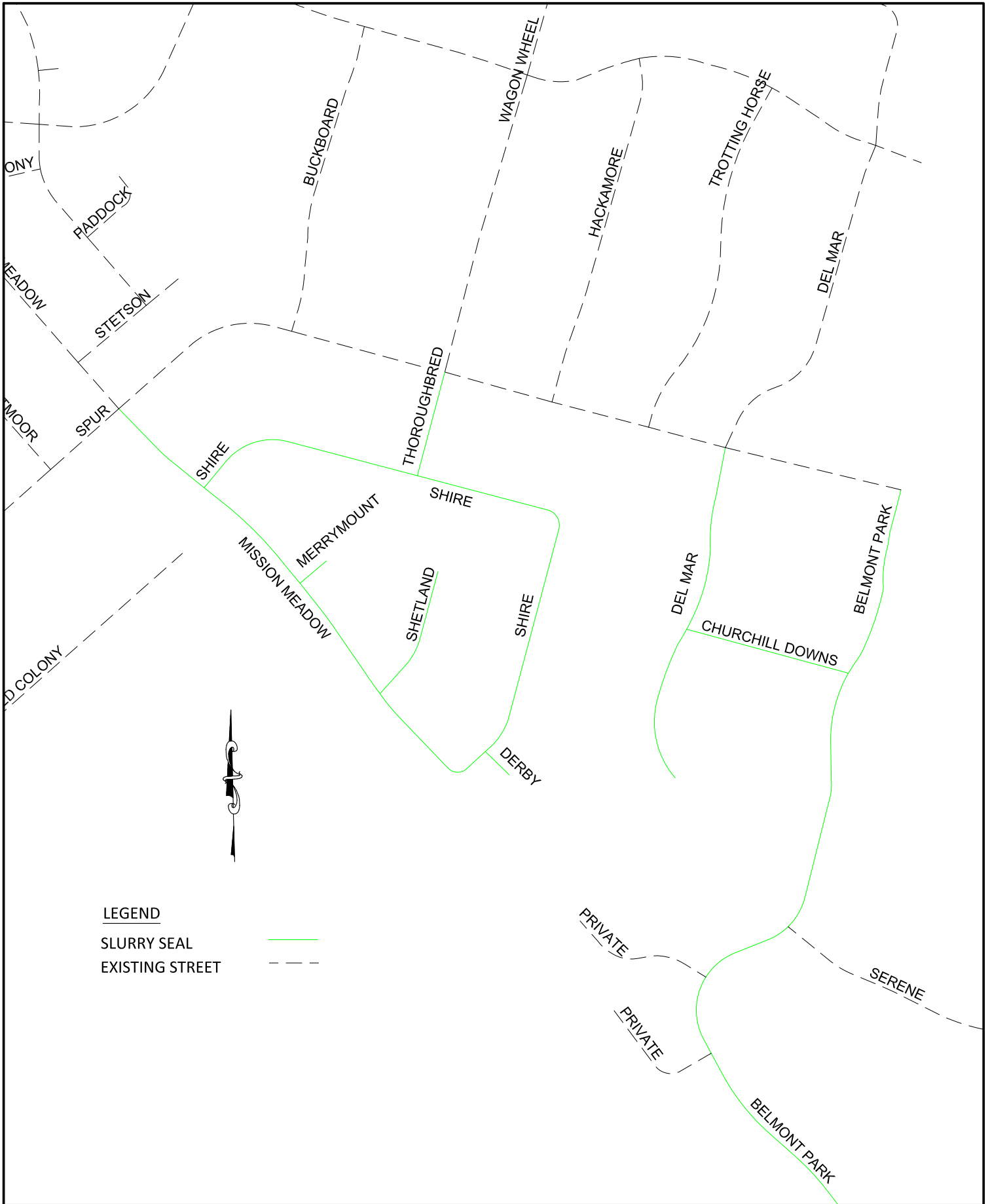
SLURRY SEAL

EXISTING STREET



FY 20-21 OVERLAY PROJECT, CIP 21-00003 &
FY 20-21 SLURRY SEAL PROJECT, CIP 21-00002
GROUP 2B - GUAJOME WEST





LEGEND

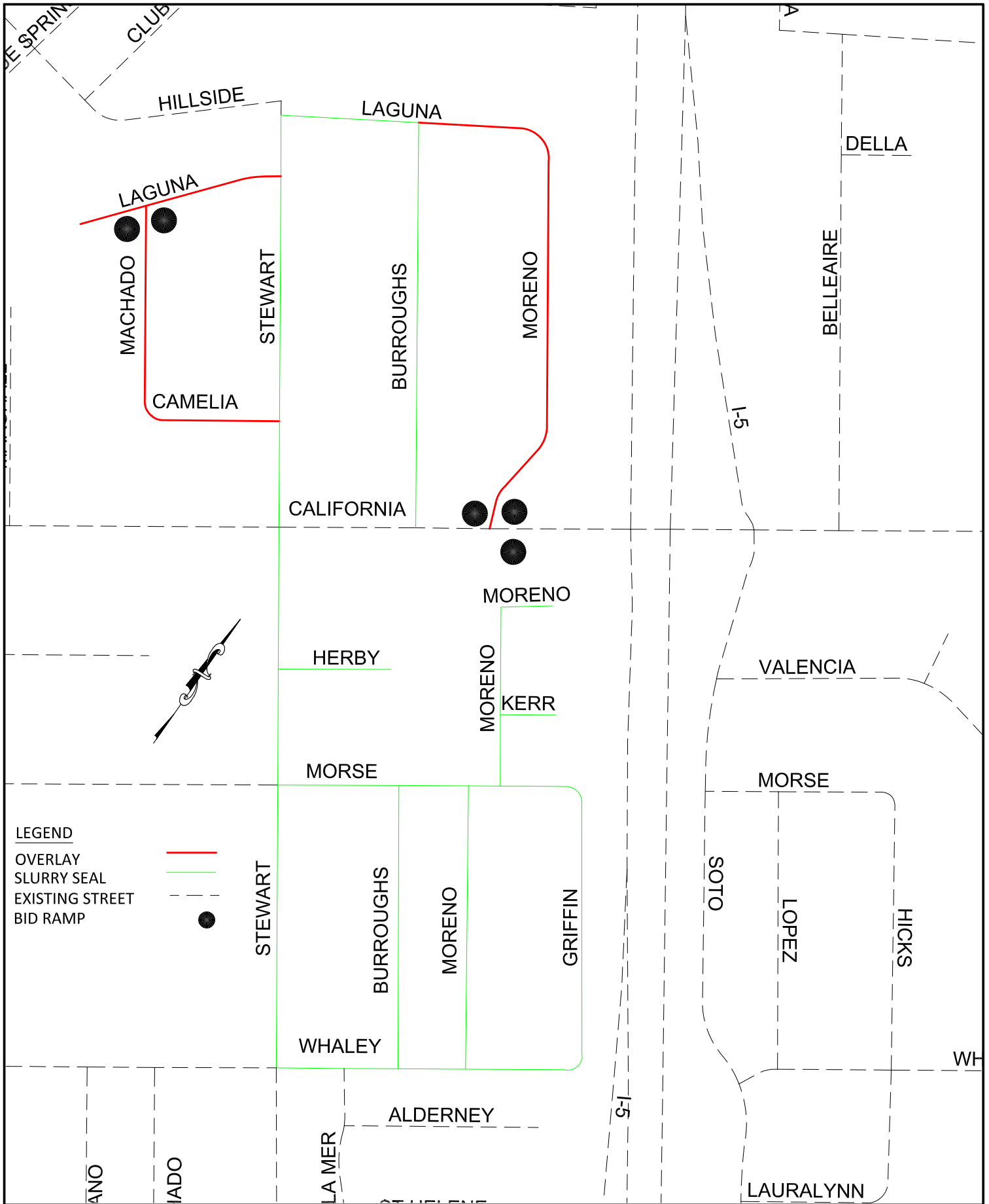
SLURRY SEAL

EXISTING STREET



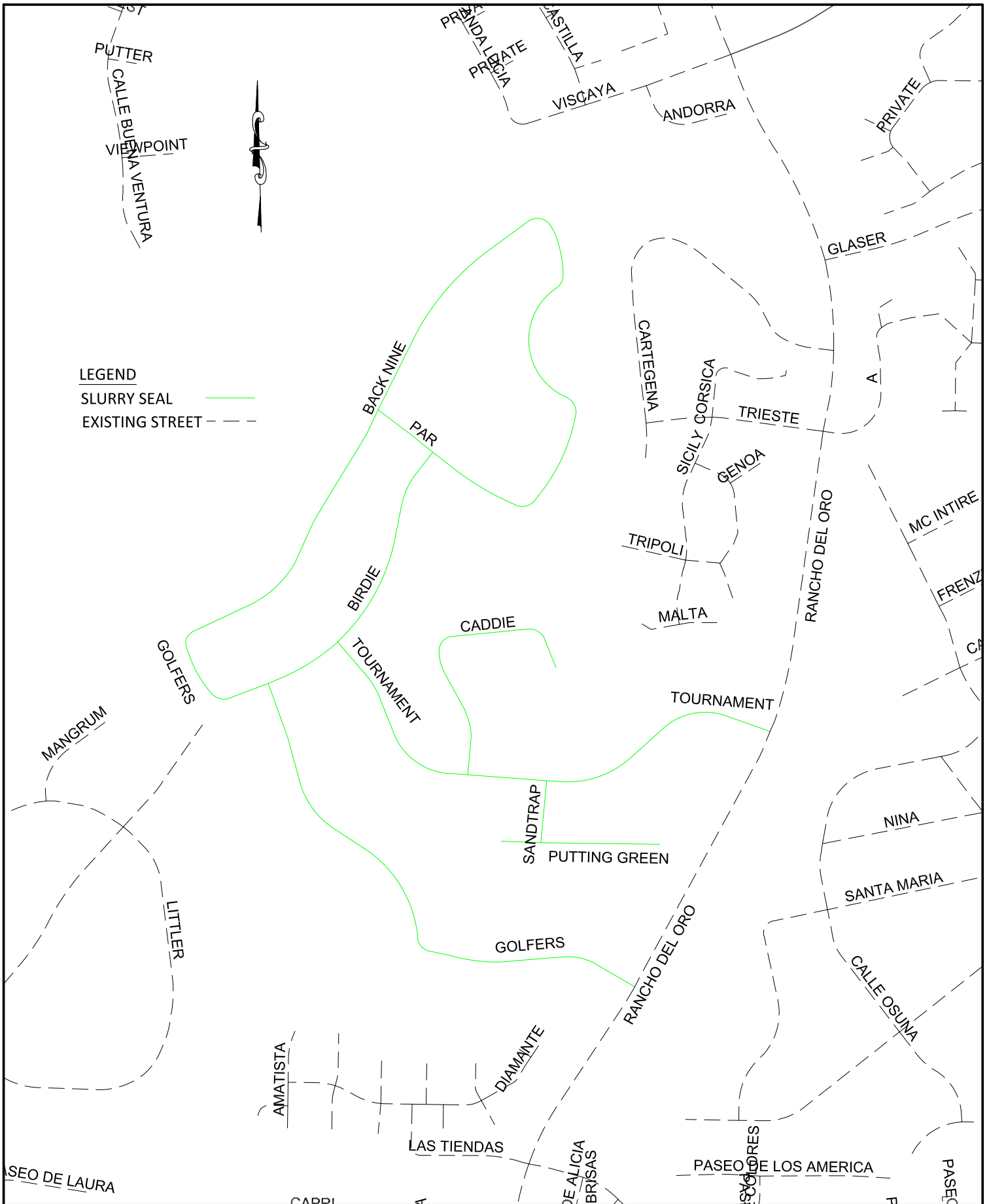
FY 20-21 OVERLAY PROJECT, CIP 21-00003 &
 FY 20-21 SLURRY SEAL PROJECT, CIP 21-00002
GROUP 2C - GUAJOME EAST





FY 20-21 OVERLAY PROJECT, CIP 21-00003 &
 FY 20-21 SLURRY SEAL PROJECT, CIP 21-00002
GROUP 3A - SOUTH OCEANSIDE





FY 20-21 OVERLAY PROJECT, CIP 21-00003 &
 FY 20-21 SLURRY SEAL PROJECT, CIP 21-00002
GROUP 3B - MIRA COSTA



